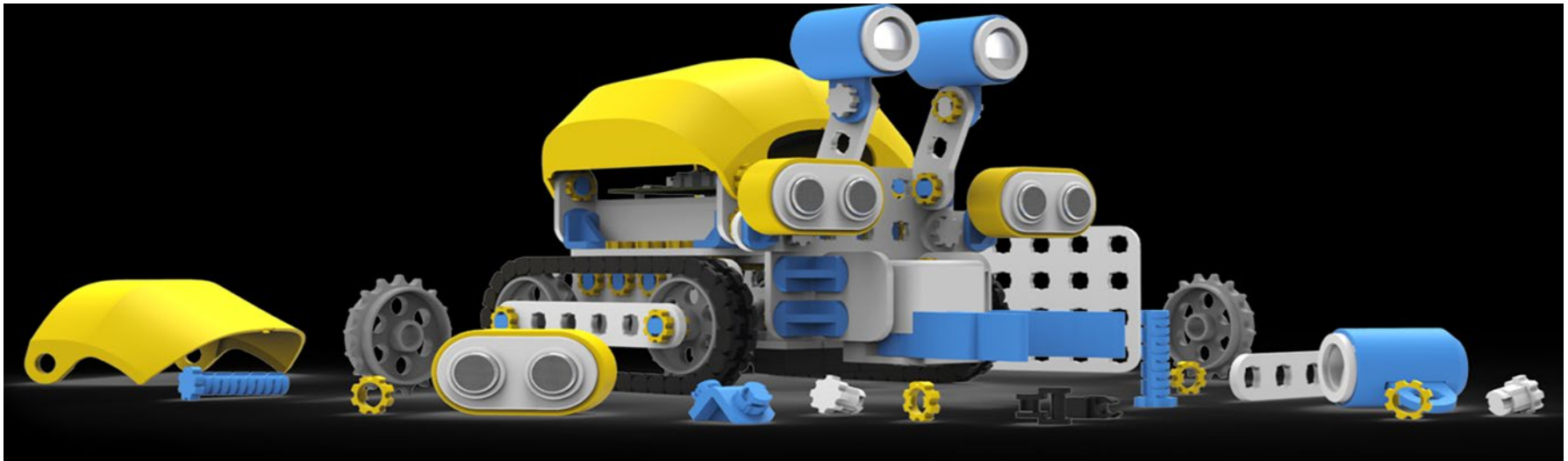


INTRODUCTION

“With PaliProto comes the Freedom to Create.”





Our Company

PaliProto provides

- 3D Printing
- 3D Design
- Prototyping & Bridge Manufacturing
- Scanning & Reverse Engineering
- Education & Training Services

Value Added Reseller for:

- premier selected 3D printer manufacturers
- 3D Systems Haptic Devices & Geomagics Software
- Shining / Afinia 3D scanners



Why Additive?

Educators, let us explore the following question with you ...

Teach your students about manufacturing:

- Design flexibility
- Speed: reduced manufacturing time: hours/days/weeks vs. months or quarters
- Often minimal secondary machining or post - near-net shape part
- Allows complex geometries
- No tooling constraints
- No hard tooling manufacturing required
- Minimal material lead time vs. months
- Automated processes
- Reduced development expenses and cycles
- Iterative concept design to functional component
- Reduced manufacturing costs
- Near wrought material properties
- Reduced product life-cycle cost
- Reduced storage cost and footprint
- And more ...

...Why should **you** pursue 3D technology at your school?



Promoted Design Tools in Q4 2021



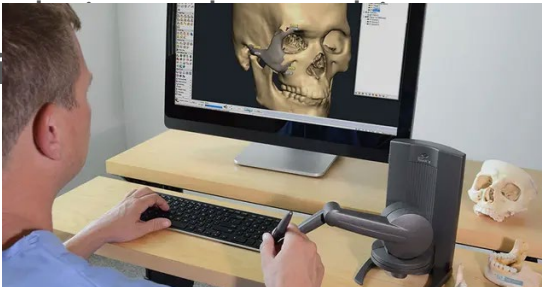
The Professional Industry 3D Design Tools Focused on the User Experience, Perfect for Your Maker Space.

The Touch™ is a mid-range, professional haptic device.

The premium Touch X™ is used in research, 3D modeling, and many OEM applications.

3D Systems Haptics devices are motorized interface devices that apply force feedback to the user's hand, allowing them to *feel* virtual objects.

This produces true-to-life touch feedback as users manipulate on-screen 3D objects. Leading companies integrate Touch haptic devices into compelling solutions using haptics.



<https://www.paliproto3d.com/product/haptic/>

3D SYSTEMS HAPTICS

Regular price Touch \$

Regular Price Touch X \$

Promoted Scanners in Q4 2021



EinScan Pro HD - Budget and student friendly.

High-definition multi-functional hand-held scanner



- Improved efficiency and speed of 3D modelling.
- Impressive high resolution for fine details.
- Handle dark or metal surfaces with less limitations.
 - Fast scan speeds for high efficiency.

Multi-functional with a modular design the handheld EinScan Pro HD, HX and H deliver unparalleled performance in capturing high resolution and accuracy through handheld scanning.

Exceptional versatility and powerful optimizations come together for the ultimate high-efficiency and professional-grade 3D scanning experience.

It is a reliable assistant for designers and engineers who care about high quality 3D modeling. It is perfect addition to engineering programs at High Schools and Colleges due to its price.



Promoted Scanners in Q4 2021



EinScan H, HX and SP - Budget and student friendly.

<https://www.paliproto3d.com/product/eiscan/>



EINSCAN H

EINSCAN H & HX
Regular price H \$4,999.00
Regular price HX \$9,999.00

EINSCAN SP
\$2,599.00 with Turntable
EINSCAN PRO HD
Regular Price \$7,699.00
Without industrial/Color Pack



EINSCAN HX



EINSCAN-SP



SHINING 3D®

Promoted Scanners in Q3 2021



EinScan Pro HD - Budget and student friendly.

HIGH DEFINITION MULTIFUNCTIONAL HANDHELD 3D SCANNER

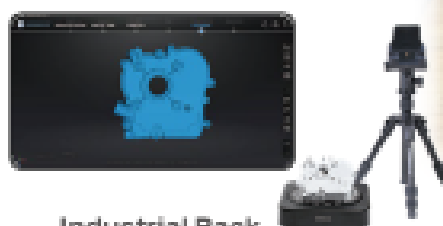
Complete Reverse Engineering Solution - EinScan RED Bundle

1. SHINING 3D EinScan series 3D scanners integrated with Geomagic Essentials and Solid Edge SHINING 3D Edition,
2. Combined with 3D printer, provide users the solution covering "3D Digitize Design & Simulate Additive Manufacture" to generate more high-quality 3D data for production.



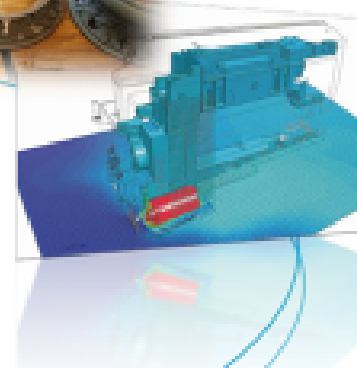
Color Pack

Gets the full-color texture with geometry.
Improves scanning efficiency through texture alignment.



Industrial Pack

Makes a static automatic scan on a turntable possible for a better accuracy.





Promoted Printers in Q3 2021



Introducing the D4K Pro. High resolution professional-grade desktop 3D printing.
Perfect for arts, figurines, and jewelry.

In addition to having the fastest speed for a standard DLP printer, D4K Pro from **EnvisionTEC** delivers extremely accurate parts with the finest detail available.

The D4K Pro is compatible with all EnvisionTEC DLP resins, including WIC100G, QView, and many other castable resins delivering zero porosity castings.

- Open material access license available.
- Intelligent closed loop minimal peeling forces.
- Remote monitoring and job starting capabilities.
- Industrial-grade UV LED projector for reliability and consistency.
- Designed to run 24/7 in a production environment.
- Material changeover can be done quickly and easily in minutes.
- Includes user-friendly Envision One RP software for fast and easy preparation of models, automatic support generation, and a fully integrated Mesh Healing tool.



Build Envelope :

148 x 83 x 110 mm (5.8 x 3.3 x 4.3 in.)

D4K PRO

Price w/1 year warranty

\$14,270.00

Call for custom pricing packages



Promoted Printers in Q4 2021



Continuous Digital Light Manufacturing (cDLM)

The Envision One cDLM is the largest, most advanced desktop cDLM 3D printer ever created. It is bigger, faster, easier to use and more innovative than all the other 3D printers on the market.

System Properties

- LED light source at 385nm wavelength for higher accuracy on clear parts and crisper details across all parts.
- Dual linear slides provide superior stability during build process, eliminating any shifting in parts.
- Perfect for a wide variety of 3D printing applications, the Envision One cDLM is capable of printing up to 45 mm/hour, material dependent.
- Dome less technology delivers the highest accuracy in Z.
- Layer less technology delivers super smooth models.
- 75% less supports compared to regular DLP printers.
- High-resolution industrial projector with UV glass.

Build Envelope

180 x 101 x 175 mm (7.09 x 3.98 x 6.9 in.)

XL Version

180 x 101 x 330 mm (7.09 x 3.98 x 13 in.)



ENVISION ONE / ONE HT (HIGH TEMPERATURE)

PRICE W/1 YEAR WARRANTY \$22,700.00

HT \$56,000.00

Call for custom pricing packages



Promoted Printers in Q4 2021



The World's First Industrial 3D Printing Solution.
Create Vibrant, Full Color Functional Parts with Minimal Post-Processing.



Rizium GF

Glass Filled Composite with High Dimensional Stability and Full Color Capabilities

RIZIUM GF is ideal for applications such as functional full color prototyping, intelligent parts in manufacturing (i.e. jigs & fixtures), larger parts that typically warp with other materials, and more.

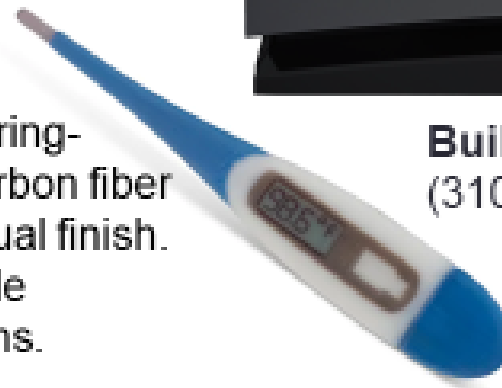
Rizium Carbon

High Stiffness Carbon Composite

Rizium Carbon is based on an engineering-grade thermoplastic, reinforced with carbon fiber for a higher modulus and incredible visual finish. Its strengths & unique properties provide solutions for a wide range of applications.



Build Envelope: 12" x 8" x 8"
(310mm x 200mm x 200mm)



XRIZE
Call for pricing



Promoted Printers in Q4 2021



**The Professional Industrial 3D Printer
Focused on the User Experience.**

Perfect for Your Maker Space.

First in its class printer with advanced composite materials that deliver strong, durable and fully functional parts. While meeting the highest health and safety standards (UL Green Guard).
Build size : 8.9" x 7.9" x 11.8" (228mm x 200mm x 300mm).

**Currently our recommended printer for
education environments.**



Materials

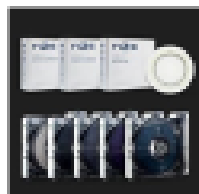
Rizium Carbon, Rizium Glass-Filled,
Rizium Support, PLA, ABS, Flexible
and PV

Dual Extruders

RIZE 2XC leverages two
independent composite-
enhanced extruder nozzles

Easy Part Removal

Reusable, flexible and heated build plate
with no glues & scraping necessary.



<https://www.paliproto3d.com/product/rize-2xc>

RIZE 2XC

Regular price \$4,495.00

zortrax Promoted Printers in Q4 2021



WITH MICROSCOPIC PRECISION AND CONSISTENT HIGH SPEED, ZORTRAX **INKSPIRE** IS THE RESIN 3D PRINTER FOR YOUR MOST DEMANDING PROJECTS.

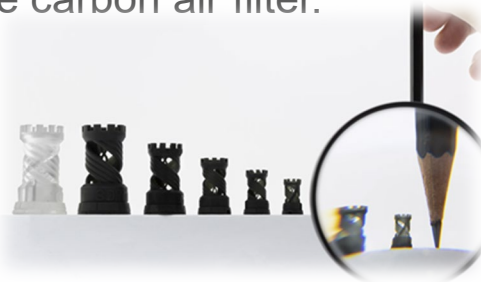
Main Features

- UV LCD 3D printing is up to 8x faster than SLA.
- UV LCD 3D printing is up to 9x more precise than SLA.
- The speed of operation is 20-36 mm/h.
- The XY resolution is 50x50 microns.
- The minimal layer height is 25 microns.
- Capable of serial production.
- External 405 nm resins are supported.
- External slicing software is supported.
- .zcodex and .cws file formats are supported.
- Wi-Fi and ethernet connectivity.
- Workspace measures Active carbon air filter.

- Zortrax Resin BASIC,
- Zortrax Resin PRO,
- Zortrax Resin FLEXIBLE,
- Zortrax Resin DENTAL Model



Build Envelope: 74 x 132 x 175 mm.



ZORTRAX INKSPIRE
PRICE W/ 1 YEAR WARRANTY
\$2,229.00

zortrax Promoted Printers in Q4 2021



M200 plus 3D printer is an integral part of educational program SkriLAB
Budget and student friendly.

Main Features

- Smart extrusion technology.
- Wi-Fi, USB, and Ethernet connectivity.
- Power outage and blackout response system and recovery.
- Material end-stop sensor.
- Calibrated build-platform with a capacitive displacement sensor.
- Works with newly developed Zortrax filaments.
- Works with third-party filaments.
- Part of SkriLAB set.
- SkriLab introduces a creative approach to learning through problem solving,
- SkriLab offers tools, materials, lesson scenarios and multimedia aids for teachers, which makes it a perfect tool for carrying out interesting and engaging lessons.



Build Envelope: 200x200x200 mm

ZORTRAX M200 PLUS
PRICE W/ 1 YEAR WARRANTY
PRINTER ONLY \$2,499.00
CALL FOR SKRILAB PACKAGE
PRICE.

zortrax Promoted Printers in Q4 2021



A smart Single/Dual-Extruder, Large Build volume, multi-material FFF system.

Budget and student friendly.

Main Features

- Dual-extrusion technology.
- Wi-Fi, USB, and Ethernet connectivity.
- Power outage and blackout response system and recovery.
- Material end-stop sensor.
- Calibrated build-platform with a capacitive displacement sensor.
- Compatible with various build platforms.
- Supports single and dual extrusion modes.
- Works with newly developed Zortrax filaments
- Works with third-party filaments.
- HEPA filter and top cover available



Build Envelope single: 300 x 300 x 300 mm

Build Envelope dual : 265 x 265 x 300 mm

ZORTRAX M300 PLUS - \$3,990
ZORTRAX M300 DUAL - \$4,999.00
PRICE W/ 1 YEAR WARRANTY

A smart Dual-Extruder, Large Build volume, multi-material FFF system.

Main Features

- Dual-extrusion technology.
- Wi-Fi, USB, and Ethernet connectivity.
- Power outage and blackout response system and recovery.
- Material end-stop sensor.
- Calibrated flexible build-platform with a capacitive displacement sensor.
- Compatible with various build platforms.
- Supports single and dual extrusion modes.
- PLA, ABS, PETG, PVA, FLEX, Carbon ber, Nylon, Glass, Wood II.
- Works with third-party filaments.
- Factory feature upgrades for 5 years
- ***) Call today for competitive pricing.**



Pro L building size: 300 x 400 x 400 mm
or 11.8" x 15.75" x 15.75"

Pro XL building size: 600 x 400 x 600 mm
or 23.62" x 15.75" x 23.62"

FELIX L - \$10,058.00 *)

XL - \$17,295.00 *)

PRICE W/ 1 YEAR WARRANTY

A smart Single/Dual-Extruder, Large Build volume, multi-material FFF system.

Main Features

- Dual-extrusion technology.
- Wi-Fi, USB, and Ethernet connectivity.
- Power outage and blackout response syst and recovery.
- Material end-stop sensor.
- Calibrated flexible build-platform with a capacitive displacement sensor.
- Compatible with various build platforms.
- Supports single and dual extrusion modes.
- PLA, ABS, PETG, PVA, FLEX, Carbon, Nylon, Glass, Wood II.
- HEPA filters and enclosures available
- Works with third-party filaments.
- Factory feature upgrades for 5 years
- Extended warranties available

- ***) Prices depends on accessories and adds on like enclosures, filters etc.**
- **Call today for competitive pricing.**



PRO 3 Touch build size: 235 x 244 x 235 mm

TEC 4 - build size: 255 x 205 x 220 mm

TEC 4L - build size 255x 205 x 400 mm

PRO3 TOUCH- \$3,440.00 *)

TEC 4 - \$2,100.00 (DUAL) *)

TEC 4 - \$1,850.00 (SINGLE) *)

TEC 4L - \$2,650.00 (DUAL) *)

A smart Dual-Extruder Bio Printing System

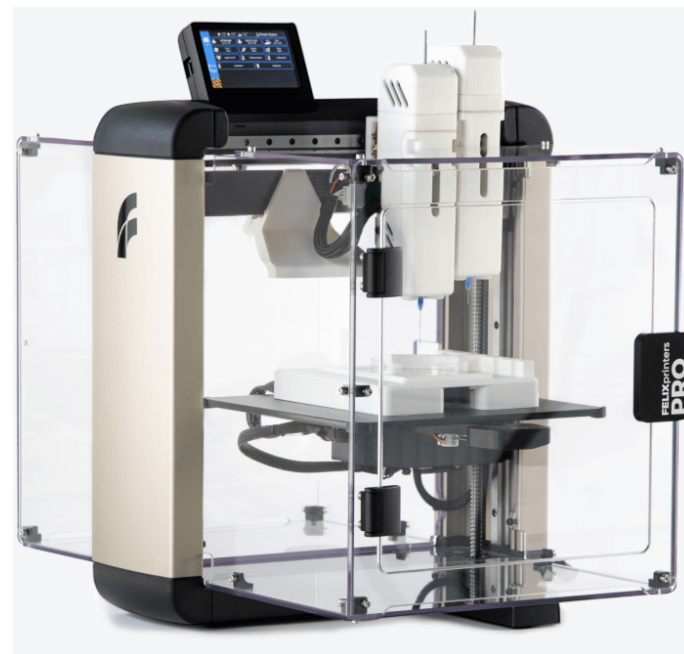
Call today for competitive pricing.

Main Features

- Dual syringe system, with fast and easy change-over
- 20 microns layer height
- Fully sterilizable
- UV Light Effectively and gently cure printed parts
- Designed to use standard 5 ml syringes / petri dishes / culture plates
- Powerful FELIX touchscreen interface, adaptable to multi-machine farm operations
- Syringe cooling / heating
- Print bed cooling / heating
- Easy Syringe positioning
- Automatic bed levelling
- Virtually Silent operation
- Open material systems

Available Inks:

[X STABLE INK](#)
[X EASYGEL INK](#)
[X GEL-MA INK](#)
[X HYDROMELT INK](#)
[X SOLID INK](#)



FELIX BIOPRINTER
PRICE W/ 1 YEAR WARRANTY
PRICE \$29,890.00
CALL FOR EDU PRICING



Promoted Printers in Q4 2021



Zmorph Fab 3D dual extruder printer- Zmorph Fab is beyond 3D printing--
it's the multi-tool manufacturing solution .

Zmorph Fab is a top-quality multi-material 3D printer, **also has** CNC routing, laser engraving, and thick paste extrusion fabrication modes--a mini-factory, right on your desktop!.

Main Features

- Wi-Fi, USB, and Ethernet connectivity.
- Dual-extrusion technology.
- Multi Tools heads: Laser cutter/engraver, CNC Router, Thick Paste Extruder
- Power outage and blackout response system and recovery.
- PLA, ABS, PETG, PMMA, FLEX, ASA, Nylon, Glass, HIPS, PVA.
- HEPA filter
- Works with third-party filaments.
- Extended warranty



Building size 250 x 235 x 165 mm
(toolhead dependent)

Prices starting at:

ZMORPH Base 3D printer only	- \$2,663.00
ZMORPH FAB 3D printer, CNC, Laser/engraver	-\$3,599.00
ZMORPH FAB MULTI-TOOL BUNDLE BOX	-\$4,139.00



A smart Single extruders, multi materials bioPrinter

Main Features

- Single syringe system, with fast and easy change-over
- Compatible syringes 10 ml plastic/metal
- X,Y precision 5 μ m
- Z precision 1 μ m
- Fully sterilizable
- UV Light Effectively and gently cure printed parts
- Syringe cooling / heating
- Print bed cooling / heating
- Easy Syringe positioning
- Automatic bed levelling
- Virtually Silent operation
- Open material systems
- Build volume 9 x 6 x 13 cm
- **Call today for competitive pricing.**

Available Inks:

range of bioinks and cells:

[gelatin methacrylate](#),

[PCL](#),

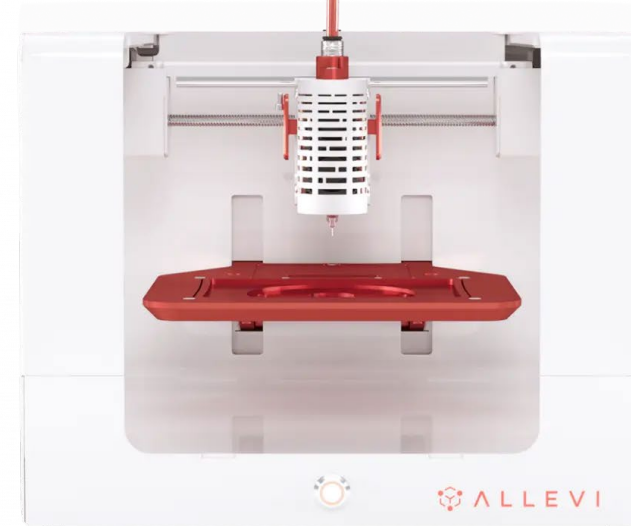
[PLGA](#),

[Hyperelastic Bone](#),

[fibroblasts](#),

and

[mesenchymal stem cells \(hMSC\)](#)



ALEVI 1 BIOPRINTER

**PRICE W/ 1 YEAR
WARRANTY**

CALL FOR EDU PRICING



ALLEVI

by 3D SYSTEMS

Promoted Printers in Q4 2021



A smart Triple extruders, multi materials bioPrinter

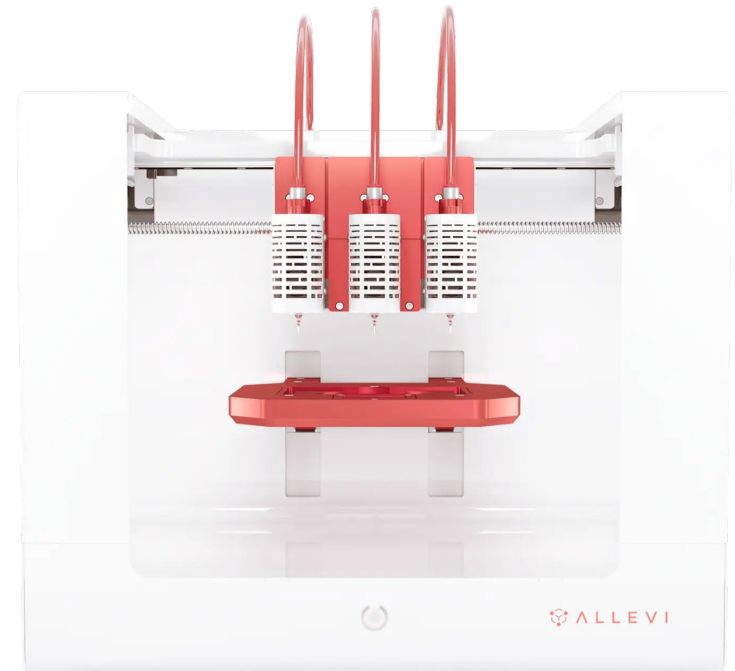
Main Features

- Triple syringe system, with fast and easy change-over
- Compatible syringes 5 ml plastic/metal
- X,Y precision 1 μ m
- Z precision 1 μ m
- Syringe cooling / heating
- Print bed cooling / heating
- Easy Syringe positioning
- Automatic bed levelling
- UV photocuring 365 and standard 405 nm
- Build volume 9 x 6 x 13 cm

Cells and Bioinks for:

Liver
Heart
Bone
Cartilage
KidneyNervous System
Skin
Vascularization

- Call today for competitive pricing



ALEVI 3 BIOPRINTER
PRICE W/ 1 YEAR WARRANTY
CALL FOR EDU PRICING

What makes us different?

Company snapshot:

Flexibility

We provide one stop service solutions for wide range of education programs and unique Maker Space requirements.

Education

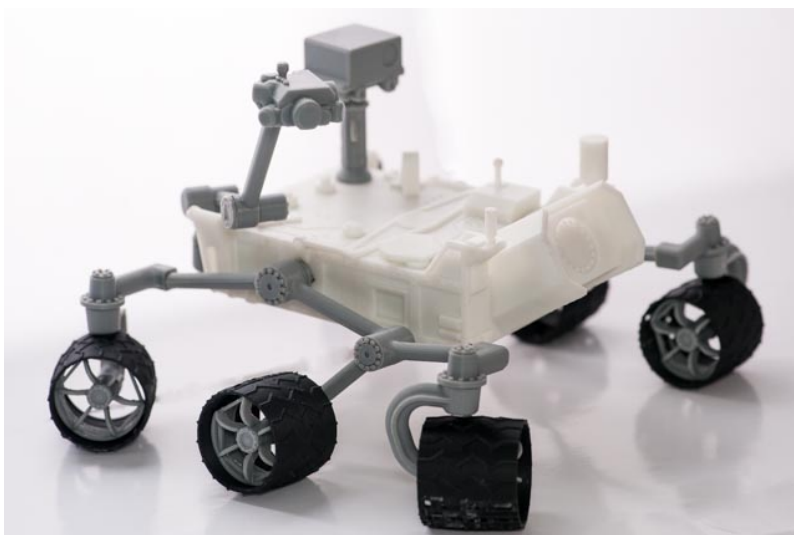
We teach and educate Teachers and Students about STEM, STEAM, Art classes, Reverse Engineering and 3D Design.

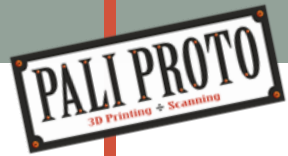
Partnership

We are an extension of our customers, vendors, and suppliers in the southeast meeting the unique needs of the education market.

Best Practices

We are a Center of Educational Excellence with the capacity to be a center of best practices and design for the industry.





Service

We have the capacity & have agreements with other verified locations for 3D Workshops and services to meet EDU needs.

Knowledge

We keep up to date on all the tech and A.M. industry events to provide you with optimal results.

Speed

We can provide solutions and turn around faster and more efficiently than anyone else. We are a one stop shop.

QA / QC

We provide Quality Assurance and Quality Control processes to provide only best in class equipment.

Support

We provide answers and guidance on all aspects of A.M. & 3D workflows. We provide support and training to teachers and help with all aspects of the 3D curriculum.

**We are adaptive -
Think Locally, Act Globally!**

“With PaliProto™ comes creativity freedom!!”





Company Management

- **Mr. Stanislaw Kuba Sliwinski**, Owner, serves as Chief Executive Officer and has served as Chief Operational Officer and to date conducts operational oversight, marketing activities, public relations activities as well as was liaison to Education, Manufacturing, Art, and Entertainment industries.
 - Mr. Sliwinski has a career spanning 41 years in Technology, Operations, Solutions across Europe, Australia, Japan, and the Americas.
 - Mr. Sliwinski spent 25 years working with high visibility, hard deadlines events such as the Winter Games, Summer Olympiads, and Different International Championships.
 - He spent 8 years working with Community Banks, 4 years with Medical Devices Company and 5 years in Travel Industry as Chief Architect.
 - Mr. Sliwinski has equivalent of a US bachelor's degree in Geology.
 - Mr. Sliwinski founded PaliProto 3D Printing in 2014, after retiring from Travelport
- **Ms. Izabela Sliwinska** serves as Communication Manager which includes the website, day to day client communications, social media, marketing communications (external and internal), trade events and local community communications for the company.
 - Izabela has over 15 years of working experience in Visual communications and problem solving as a Business Analyst.
 - She holds a B.F.A in Photography. Currently she servers as Interim Operations Manager.

Do you have questions about additive tech?

Do you have any of the below concerns? Allow us to address them with a consultation!

- **Evolving technology** – not everyone is familiar with the technology and terminologies. We will simplify it for you.
- **Barriers to entry** – initial high start-up costs for professional equipment. There are multiple grants and funding paths available.
- **Lack of education** – lack of experienced teachers understanding 3D technologies, design and operation. We will teach you and your team and provide a train-the-trainer model.
- **Challenges with 3D design software**– We will help you to understand the different design approaches for materials, applications, 3D technologies and more.
- **Variability in materials** - material properties are still being defined, different names, fillers, lack of certifications, lack of testing data. Many materials on the market. We will help you to choose initial materials.
- **Closed systems** - multiple printing standards and implementations often proprietary and not interchangeable. We will help to choose the best for your school programs, and we are not married to a single vendor.
- **Poor QC** – cheap printers, bad materials, incompatible accessories, bad files, lack of knowledge etc. leave end users with a stigma of 3DP technologies. We will help you to navigate the wild market.
- **Lack of support** - Poor technical support overall and nonexistent post installation service. We stand behind our products.



Select EDU Partners Snapshot



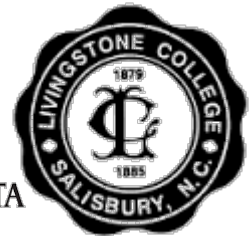
CITY SCHOOLS OF DECATUR



Flowery Branch High School



EMORY
UNIVERSITY



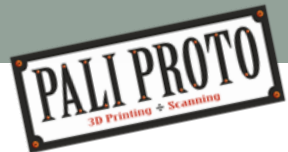
Christiana Middle School



Chestatee High School
Gainesville, Georgia



THE
EPSTEIN
SCHOOL



Contact us for pricing, print samples and
order information

Kuba

Kuba@paliproto.com

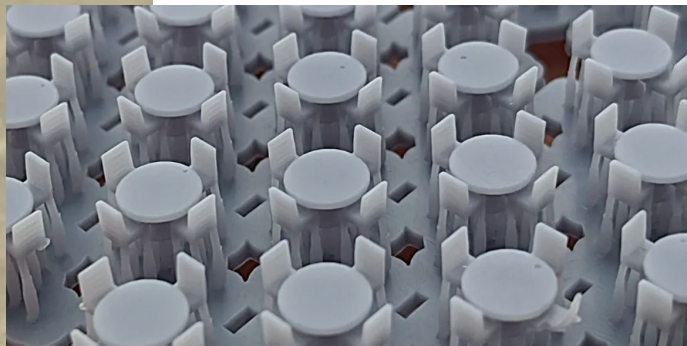
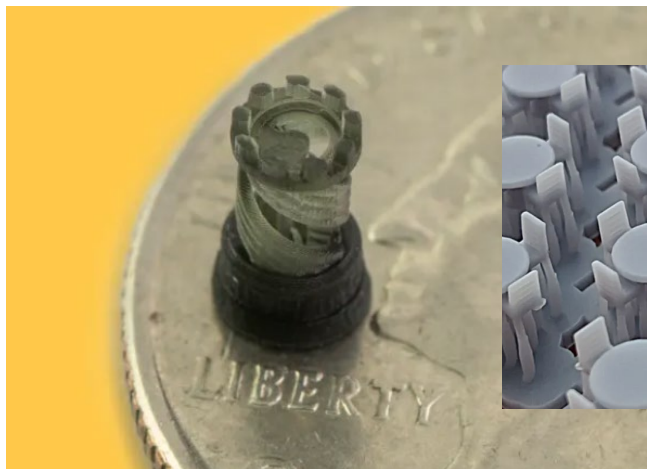
404.353.2840

Izabela

Izabela@paliproto.com

678.560.3739

THANK YOU FOR YOUR TIME



“With PaliProto comes creativity freedom.”

PaliProto™

1300 Mountain Retreat WAY N.W. STE 140
MARIETTA, GA, 30060

support@paliproto.com

678.560.9837

www.paliproto.com